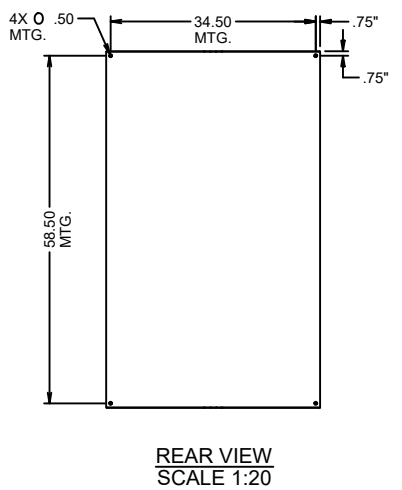
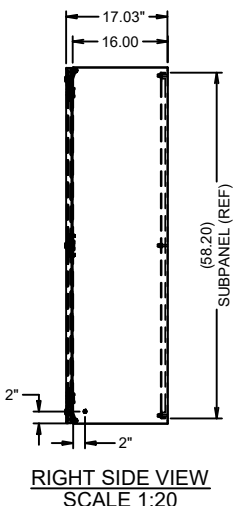
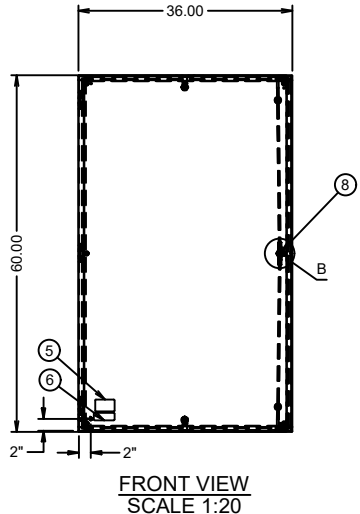
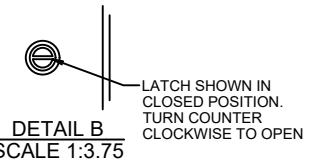
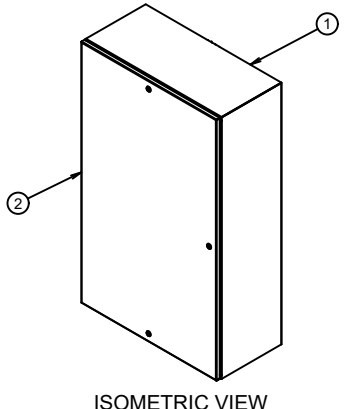
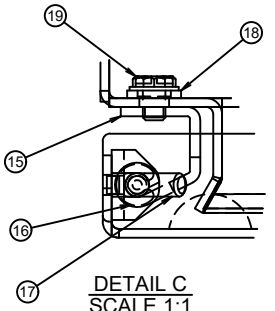
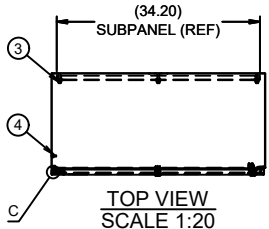


6 5 4 3 2 1



REVISION HISTORY			
REV	DESCRIPTION	DATE	APP

BILL OF MATERIALS			
#	PN	DESC	QTY
1	ES-603616_H_ASM	TUB, WELDMENT	1
2	ES-603616_D1_ASM	DOOR, WELDMENT	1
3	200-0058	NUT, FLANGE, STEEL, ZY FINISH, 3/8-16, SERRATED	8
4	200-0065	NUT, KEPS, STEEL, ZN FINISH, 1/4-20	2
5	200-0108	LABEL, UL ICIP TYPE 12,13,4	1
6	200-0500	LABEL, MANUFACTURE / ORDER# w/SCHAEFER'S LOGO & US FLAG	1
7*	200-0099	POCKET, LARGE DATA, GRAY 10.375"W x 9.375"H x 1.045"D w/DOUBLE SIDED TAPE	1
8	200-0040	LATCH, QT, ZN, BLK PC FINISH, ZINC SLOTTED INSERT, BLK PC FINISH	3
9*	200-0010	CAM, 1 PT OFFSET DN, STOP, STEEL, ZN FINISH, 12 H, 45 L	2
10*	200-0095	WASHER, SEALING, STEEL, ZN FINISH, 3/8, 0.43 ID, 0.75 OD, BONDED SEALING WASHER	4
11	200-0034	LATCH ROD, ROUND, SOLID, STEEL, ZN FINISH, 1200 L, NYLON ROLLERS	2
12	200-0067	ROD GUIDE, ROUND LATCH RODS, NYLON, 21.5 H, FOR ROUND RODS	2
13	200-2039   200-2040	Raku Pur 32-3250 A/B FIP Gasket	1
14	1000-U33 ASB	CAM ASSEMBLY, 3 PT, 30MM OFFSET	1
15	200-1644	HINGE BASE FOR MEDIUM DUTY HI-MDMS-140130, MS ZN PLATED FAB. PER PRINT	3
16	200-1642	HINGE CLIP FOR MEDIUM DUTY HI-MDXX-140130, RED PLASTIC FAB. PER PRINT	3
17	200-1645	HINGE PIN FOR MEDIUM DUTY HI-MDMS-140130, MS ZN PLATED FAB. PER PRINT	3
18	200-0434	WASHER, RETAINING, NYLON, #10-M5, 0.172 ID, 0.453 OD	6
19	200-1668	MACHINE SCREW, SS188, #10-32 X 0.25, FLANGE HEAD, SLOTTED HEX DRIVE	6

NOTES:  
1. SEALING WASHERS PROVIDED FOR MOUNTING.  
2. PLASTIC PRINT POCKET SHIPPED LOOSE.

SUBPANEL(S) SHOWN FOR REFERENCE ONLY AND IS ORDERED AS A SEPARATE LINE ITEM OR AS A SEPARATE PURCHASE

ORTHOGRAPHIC VIEWS ARE DRAWN AT 1:1 SCALE (PRINTED SCALE MAY VARY)

DIMENSIONS APPLY BEFORE SURFACE TREATMENT	
TOLERANCES UNLESS OTHERWISE SPECIFIED	
0.xxx	± 0.010
0.xx	± 0.06
0.x	± 0.1
x	± 0.25
x.x"	1"

NAME: SSGT DATE: 12/26/17

DRAWN BY: SSGT

**Schaefer's**  
ELECTRICAL  
4680 NASH ROAD  
SCOTT CITY, MO 63780  
PH: (573) 886-8400 FAX: (573) 886-8499  
WEB PAGE: electrical-enclosures.com

THIRD ANGLE PROJECTION

CUSTOMER:		CUSTOMER NAME	
TITLE: <b>SINGLE DOOR ELITE SERIES ENCLOSURE</b> 60.000 in"H x 36.000 in"W x 16.000 in"D			
FINISH: <b>B</b>	nnn	WEIGHT: <b>236.841 lbm</b>	
FILE: ES-603616	REV. -	CUST. DWG. nn	REV. -
MAT.: 14GA. CARBON	SHEET 1 OF 2		

6 5 4 3 2 1